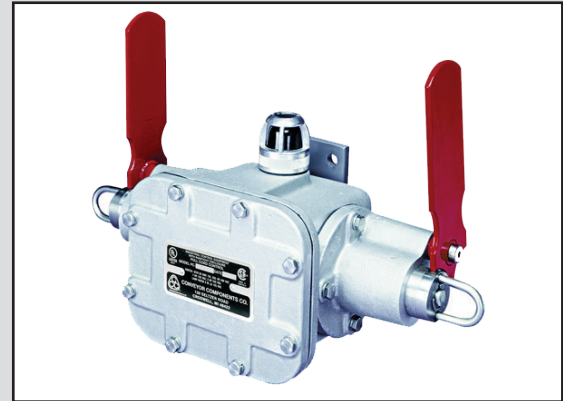


Key Features

- Provides quick shut down to Conveyors
- Provides personnel Protection
- Keeps Damage costs Low
- Allows for shut down along entire belt
- Ambidextrous switch for all Personnel
- Safety switch Cable break detection
- Actuation force at 16 & 25 Lbs



Description

The Model PC is a rugged compact safety switch that provides a quick positive shut off of dangerous equipment in emergencies or normal operation. It is actuated by cable pulled by endangered personnel. The output contacts of the Model PC can control up to two separate circuits, one for machinery shutdown and one for alarm.

Why buy the Model PC?

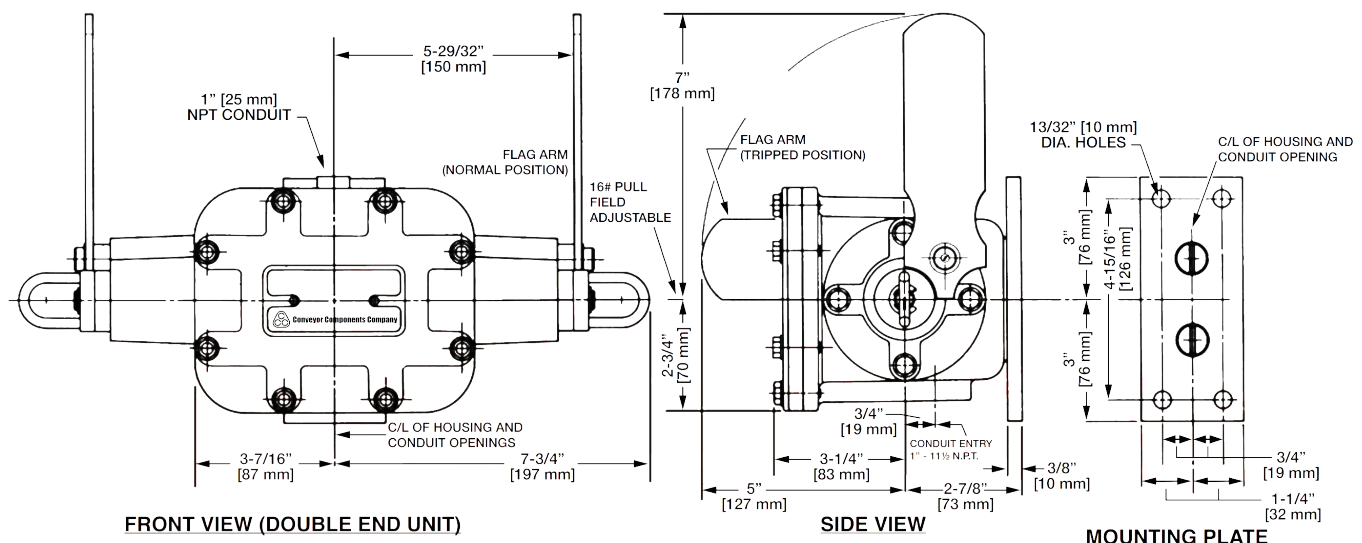
The Model PC pull-cord switch is a must for employee protection. Whether it is used with conveyors, production lines, elevator equipment, assembly lines, material handling systems, cranes, etc. It provides a safe way for endangered employees to provide positive shut off to equipment in their working environment.

Principle of Operation

The Actuator inside the Model PC is activated through one of the two red levers, this in turn activates a micro switch which will perform an emergency shutdown on the system which it is wired to. This can include an alarm if so desired, as well as an indication light that shows whether a actuator has been activated. This permits easy detection in low visibility areas. The Model PS provides an efficient way to protect equipment that has the potential to be hazardous.

Mounting

4 holes at $\text{Ø}13/32$ [10 mm]; Surface mount parallel to pull-cord direction standard; mounting bracket available for surfaces perpendicular to pull-cord direction



Model PC Dimensional Drawing



Selection and Model Information

1-Single Pole:
Double throw micro switch
PCL-1S.....Left Hand
PCR-1S.....Right Hand
Typical Use:
Emergency shutdown of conveyors or other machinery.

1-Two Circuit:
double break micro switch for D.C. circuits
PCL-1T.....Left Hand
PCR-1T.....Right Hand
Typical Use:
Emergency shutdown of conveyors or other machinery

1-Single Pole
double throw micro switch at each end.
PCD-2S.....Double ended
Typical use:
Emergency shutdown of conveyors or other machinery.

1-Two Circuit:
Double break micro switch D.C. circuits
PCD-2T.....Double Ended
Typical use:
Emergency shutdown of conveyors or other machinery.

Available options:

Explosion-Proof for Hazardous Locations • **Epoxy** Coating for Corrosive locations

2-Single Pole:
double throw micro switch
PCL-2S.....Left Hand
PCR-2S.....Right Hand
Typical Use:
Emergency shutdown of conveyors or other machinery
-- with alarm or secondary function capability.

2-Two Circuit:
double break micro switch for D.C. circuits
PCL-2T.....Left Hand
PCR-2T.....Right Hand
Typical Use:
Emergency shutdown of conveyors or other machinery
-- with alarm or secondary function capability.

2-Single Pole:
double throw micro switch at each end
PCD-4S.....Double Ended
Typical Use:
Emergency shutdown of conveyors or other machinery
-- with alarm or secondary function capability.

2-Two Circuit
double break micro switch at each end for D.C. circuits
PCD-4T.....Double ended
Typical Use:
Emergency shutdown of conveyors or other machinery with alarm or secondary function ability.

Available options:

Explosion-Proof for Hazardous Locations • **Epoxy** Coating for Corrosive locations • **Optional Light** for remote or dark locations

Special Applications

Hazardous Locations:

UL/CSA explosion proof units meet NEMA Type 7 - Class 1 (Div. 1 &2), Groups C and D NEMA Type 9 - Class II (Div. 1 & 2), Groups E, F and G for hazardous locations. Add "X" to model number, NO ADDITIONAL CHARGE.

Corrosive Locations:

Epoxy coated housing with standard flag arms and plated torsion springs. Please add "E" to model number.

Remote or Dark Locations:

Use our red warning light in dark and remote areas (requires two micro switches per end of housing). 125 VAC. (incandescent)

NOTE: Available in rain tight, dust tight and explosion proof.

Add Suffix "L" to model number.

125 VAC LED lamp available by special order.

Specifications

| | |
|-------------------------------|--|
| Product | |
| Weight | 16 Lbs |
| Environment | |
| Certified Ambient Temperature | -30 to +40 °C [-22 to +104 °F] |
| Enclosure Material | 319 cast aluminum |
| Enclosure Rating (UL) | NEMA Type 4X |
| Enclosure Rating (CSA) | NEMA Type 3, 3S, 4 |
| Mounting | 4 holes at Ø13/32" [10 mm]; Surface mount parallel to pull-cord direction standard; mounting bracket available for surfaces perpendicular to pull-cord direction |
| Switch | |
| Switch Type | SPDT x 4 (2 per switch end) |
| Contact Type | Dry Contact |
| Contact Rating | 20A @ 480V max AC; 10A, tungsten @ 125 V AC; 1 hp 125V AC; 2 hp 250V AC; ½ A @ 125V DC; ¼ A @ 250V DC |
| Electrical Action | Latching (via actuator) |
| Electrical Connection | 1" NPT x 2 |
| Actuator | |
| Type | Pull Cord Switch (Double Sided Pull) |
| Cable Length | Maximum 100' (30.5 m) attached to each switch end. |
| Cable Material | galvanized aircraft cable |
| Cable Length | 100' on each side |
| Action | Latching (To reset, rotate flag parallel to mounting surface) |

Product Certification

| Standard | Class | Division | Group(s) |
|-------------|-------|----------|----------|
| UL 508 | N/A | N/A | N/A |
| CSA 3211-06 | N/A | N/A | N/A |



ES703 Rev C © 2024 Electro-Sensors, Inc. All rights reserved.



Ordering

| Description | Model |
|--|--------|
| Left Ended unit with 2 (SP/DT) Microswitches | PCL-2S |
| Right Ended unit with 2 (SP/DT) Microswitches | PCR-2S |
| Dual Ended unit with 2 (SP/DT) Microswitches per end | PCD-4S |
| Right Ended unit with 2 (TC/DB) Microswitches | PCR-2T |
| Left Ended unit with 2 (TC/DB) Microswitches | PCL-2T |
| Dual Ended unit with 2 (TC/DB) Microswitches per end | PCD-4T |

SP/DT = Single Pull / Double Throw
TC / DB = Two Circuit / Double Break

Options and Accessories

| Other Accessories | | |
|--------------------------------------|--------|-------|
| Description | Part # | Image |
| Safety Cable - Vinyl Coated | PC-25 | |
| Cable Support Eye Bolt | PC-27 | |
| Double Ended Eye Bolt | RS-23 | |
| Cable End Fitting | PC-28 | |
| Pigtail-Style Cable Support Eye Bolt | RS-27P | |
| Conduit Plug, 3/4" NPT | RS-29 | |

For other options contact Sales Dept.

Typical Industries

- Grain
- Manufacturing
- Mining
- Construction
- Assembly Lines

Common Applications

- Conveyors
- Production Lines
- Assembly Lines
- Material Handling