

## Key Features

- New and retrofit installations
- Straightforward installation (drill and tap)
- No additional brackets or hardware needed
- Heavy-duty, long-life sealed bearing
- Assembly moves with the shaft, compensating for typical shaft movement and vibration
- Can be used with optional Mounting Magnet if shaft is not tapped



## Description

The EZ-100 makes speed monitoring easier and more cost-effective. This bracket assembly includes a heavy-duty, long-life sealed bearing, a stainless steel shaft, a painted aluminum bracket, and comes with all other necessary hardware for installation.

The EZ-100 allows a shaft speed switch or speed sensor to be mounted quickly and easily by simply drilling and tapping the shaft end for a 1/2" - 13 thread, and turning the EZ-100 bracket assembly onto the shaft. The speed sensor or speed switch easily mounts to the EZ-100 bracket assembly with the supplied U-bolt.

## Compatibility

| Shaft Speed Switches | Shaft Speed Sensors  |
|----------------------|----------------------|
| • M100T              | • 907 XP             |
| • FB420              | • 917 XP             |
| • M100               | • SpeedTalker-DN(XP) |

## Mounting

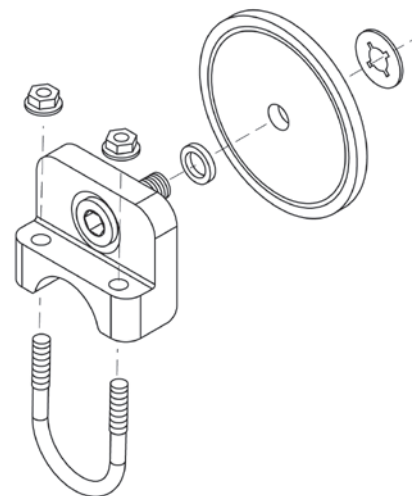
Mount the speed switch or speed sensor to the EZ-100 bracket assembly. Put the sensing extension of the housing between the concave edge of the bracket and the provided U-bolt. Place the open ends of the U-bolt through the holes on the bracket and tighten the lock nuts firmly. The gap between the Pulser Disc and sensing face should be approximately 1/4".

## Installation

Center-drill the end of the shaft with a 27/64" drill to a depth of approximately 1", then tap for a 1/2" - 13 UNC 2A thread to a depth of at least 3/4" full threads. After drilling and tapping the shaft, apply Loctite® or a similar adhesive to the screw threads and screw the EZ-100 bracket assembly securely onto the end of the shaft. Torque the mounting shaft firmly (7 foot-pounds max).

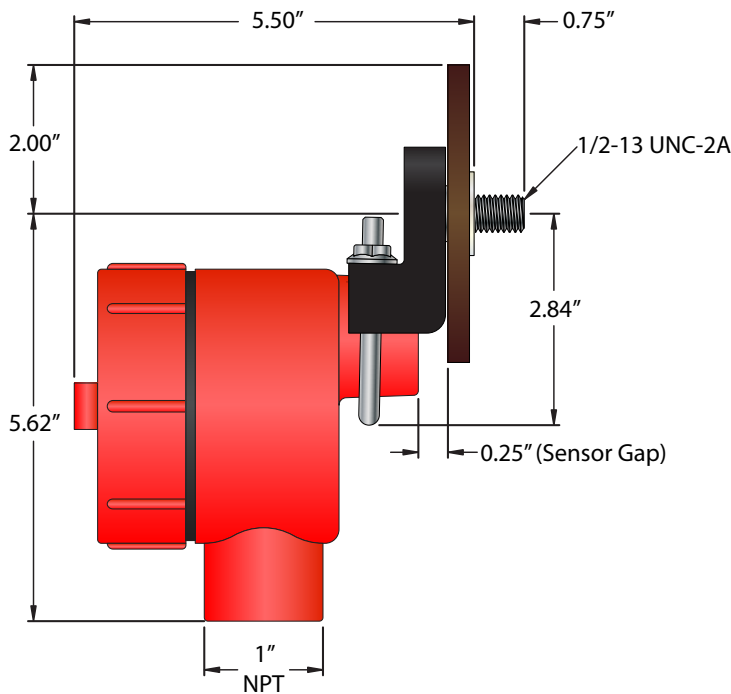
**NOTE:** Installing the EZ-100 bracket assembly on a shaft that is not center drilled and tapped accurately will greatly reduce the life of the system. Electro-Sensors recommends using flexible conduit (XP if necessary) to secure the speed switch or sensor housing via the 1" NPT opening. Flexible conduit will allow the EZ-100 bracket assembly to move with the shaft, compensating for typical shaft movement and vibration, and avoid binding on the bearing.

## Exploded view of Standard EZ-100 Mounting Bracket Assembly



## EZ-100 Dimensional Drawing

Drawing depicts EZ-100 with M100T, FB420, or SpeedTalker-(DN)XP (Also compatible with 907 XP, M100, 917 XP)



## EZ-100 Specifications

|   |   |
|---|---|
| <b>Body</b>   |   |
| Material  | Aluminum (6061-T6)  |
| Finish  | Black Powder Coat   |
| <b>Shaft</b>  |   |
| Material  | Stainless Steel (303)   |
| Thread Size   | 1/2" - 13 UNC 2A  |
| Hex Wrench Size   | 3/8"  |
| <b>Pulser Disc</b>  |   |
| Standard  | Model 255-EZ  |
| Material  | Nylon 12 (Standard)   |
| Optional Materials  | Aluminum, PVC, Stainless Steel  |
| Pulses Per Revolution   | 8 (Standard) Options Available  |
| <b>Bearing</b>  |   |
| Type  | Radial, Sealed (Designed for Radial and Thrust Loads)                               |
| <b>Operation</b>  |   |
| Maximum Speed   | Recommended for speeds up to 300 RPM (contact factory about using at higher speeds) |
| Operating Temperature   | -40° C to +60° C<br>-40° F to +140° F   |
| <b>Environment</b>  |   |
| The EZ-100 is NOT recommended for use where caustic chemicals will be used for wash-down of machinery |   |

*Specifications subject to change without notice.*

## Ordering

| Model Description  | Part Number |
|--|-------------|
| EZ-100 Mounting Bracket Assembly - Standard (Includes 255-EZ Pulser Disc and U-Bolt) | 810-000001  |
| EZ-100 Mounting Bracket Assembly (Includes U-Bolt Only, No Pulser Disc)              | 810-000036  |

## Spare Parts

| Model Description                          | Part Number |
|--|-------------|
| 255-EZ Pulser Disc (Nylon, 16 Magnets)     | 700-000206  |
| 255A-EZ Pulser Disc (Aluminum, 16 Magnets) | 700-001502  |
| 232-EZ Pulser Disc (PVC, 32 Magnets)       | 700-001404  |
| 232A-EZ Pulser Disc (Aluminum, 32 Magnets) | 700-001403  |

## Options

| Model Description  | Part Number |
|--|-------------|
| MM-2.00 EZ Mounting Magnet (Must be Used with EZ-100 Mounting Bracket) | 810-000050  |
| EZ-Mount Disc Guard (for 4" Discs)                                     | 725-005200  |
| EZ-Mount Lower Disc Guard (for 4" Discs)                               | 725-005201  |

## Customization

If one of our standard products does not meet your specifications, please call one of our applications specialists. Many of our products can be customized to fit specific needs.

## Additional Information

Please call Electro-Sensors for more information.